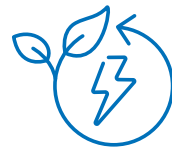




Ultra Fast

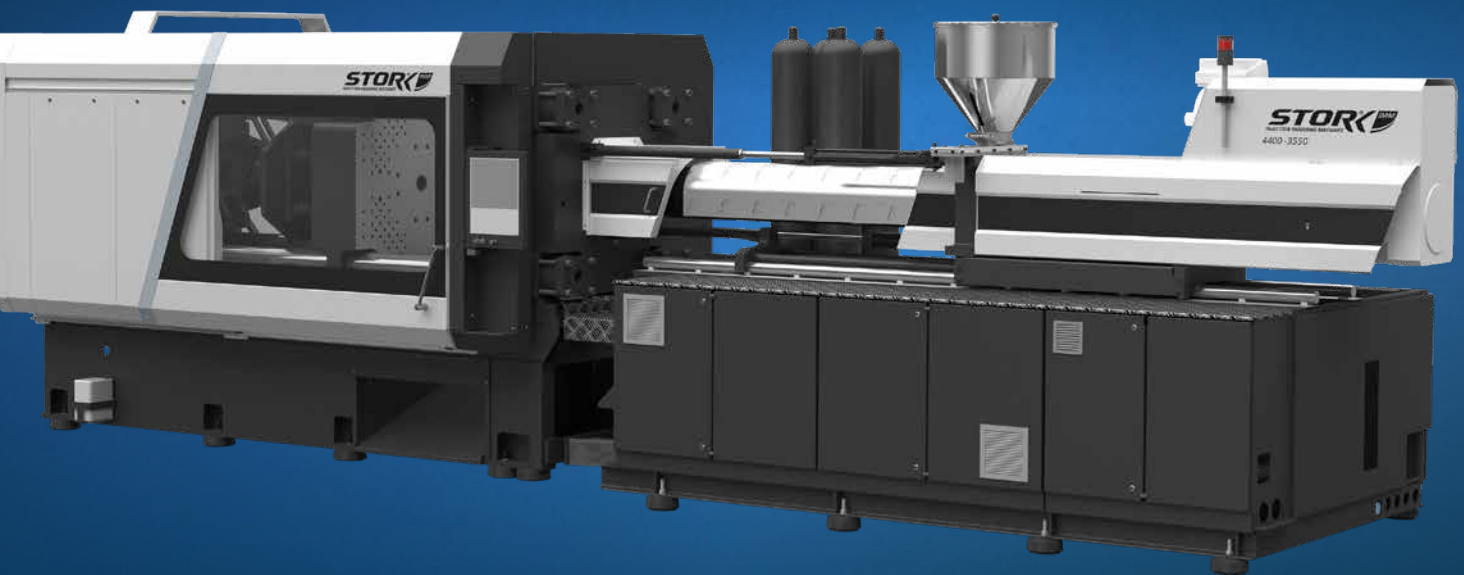


Reliable



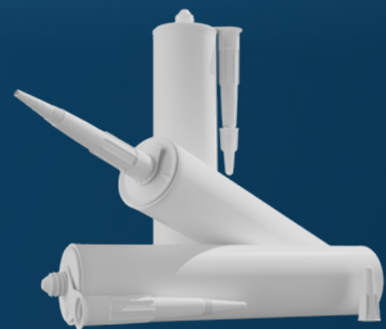
Sustainable

## Full Hybrid Stork IMM 3300-1450



The Stork IMM is a heavy-duty IMM, designed to run a lifetime at short cycle-times, 24/7. Speed and reliability are key elements that apply both for the machine as for the after-sales service.

Stork IMM injection moulding machines have low cost of ownership. Due to their robust and rigid design, the lifetime of moulds is longer than normal.



### Key benefits

- ✓ Maximum output
- ✓ Less downtime
- ✓ Lower energy cost

**STORK<sup>®</sup>** IMM  
INJECTION MOULDING MACHINES

# built for today's industry needs

## Full Hybrid Stork IMM 3300-1450

The full hybrid Stork IMM 3300-1450 machine with ultrafast injection speed capability, includes the improved platen stiffness, linear guiding under the movable platen and clamped toggle pins for a longer lifetime of the mould, a better product quality and all machine options for an optimized production.

The machine produces an 8 Cavity HDPE Silicone cartridge with a cycle time of 12s (2400 parts/hour).

### Injection Moulding Machine

Type	Stork IMM 3300-1450
Clamping force	3300 kN
Cycle time	12 s
Dry cycle time	1.4 s (441 mm)
Screw	62 mm 25 L/D
Injection pressure / speed	1800 bar / 1000 mm/s
Machine type	Full Hybrid
Electrical clamping	Yes, rack and pinion drive
Energy recovery	Yes
Electrical screw drive	Yes
Variable pump	Yes
EUROMAP 77 compatible	Yes
EUROMAP 60.1 energy class	8 (cycle II)*

\*) Values are based on calculations of the actual machine configuration.

### Built for Today's Industry Needs

The Stork IMM full hybrid range is designed for flowerpots, pails, food packaging, cartridges and other thin-walled products. With clamping forces ranging from 2500 kN to 11000 kN, these machines provide:

- ✓ High speed for maximum output.
- ✓ Low energy consumption
- ✓ High stability for consistent, top-quality results.

For the production of cartridges a relatively small clamping unit paired with a high injection performance is the ideal setup. Fast clamp speed for long opening strokes, precise parallel movement of the ejector and a fast change of the clamp moving direction are necessary for a hybrid clamp configuration. On the other side, high plasticizing performance and ultrafast injection speed can be achieved as well on the combination of electrical and hydraulic drives.

### Mould

Supplier	Brink Moulds & Automation
Type	8 cavity silicone cartridge
Wall thickness	1.45 mm
Product weight	45 g
Material	SABIC® HDPE M864SE

### Material transport

Supplier	Koch-Technik
----------	--------------

### Cooler

Supplier	Oni 549 KWSLP 80
----------	------------------



With its modular design and proven reliability, the Stork IMM Full Hybrid Range gives manufacturers the ability to optimize production while meeting the growing demands of performance and environmental responsibility.

More info:



We thank the following companies for their contribution:

